



World's Only Self-Flushing, Self-Washing Cat Box™

# SIMPLE SETUP OF YOUR 120

## TABLE of CONTENTS:

Cat Preparation. Guarantee, Warranty, CatGenie Terms

Unpack & Check **2.** Assemble 4 Easy Pieces **3.** Laundry Room Setup

**4.** Bathroom Setup **5.** Ready, Set, Run CatGenie

**6.** Your Cat & Your CatGenie

**IMPORTANT: READ  
NEXT PAGE**



# 90-DAY, MONEY-BACK GUARANTEE

With our 90-Day, Money-Back Guarantee, you and your cats have a total of 90 days from your purchase date to fall in love with your CatGenie.

**TIP:** Save original packaging and receipt for your CatGenie for at least 90 days in case you need to return it. See the back cover of the Green Owner's Guide for complete details.

# TWO-YEAR WARRANTY

Before assembling, write down your serial number located on the back of the Processing Unit. Fill in on the line below and also in your Green Guide. Handy if you ever have to call us.

Purchasing your CatGenie through CatGenie Australia automatically registers your 2-Year warranty and grants you access to exclusive offers and savings on supplies and accessories.

Your Serial Number is

# \_\_\_\_\_

# 1. CatGenie<sup>®</sup> UNPACK & CHECK UNPACK CAUTIOUSLY.

Do not drop.  
If you suspect that your CatGenie is defective, do not use. Contact CatGenie Australia: 1300-Cat-Genie 1300-228-436 support@catgenie.com.au

**TIP:** Save original packaging and receipt for at least 90 days in case you need to send your CatGenie back.

# CONTENTS:

1) Cat Acclimation Guide. 2) Owners Guide. 3) Simple Setup Sheet. 4) Processing Unit, attached Water Supply Hose and Power Cord. 5) CatGenie Base, includes Brim, Bowl, Hopper, and attached DrainHose. 6) Drain Hook for toilet. 7) GenieHand. 8) Laundry T-Adapter & Toilet T-Adapter. 9) Hopper Cover. 10) Spare Parts Kit located under the Base. 11) Genie Ball (See Green Guide Page 4) 12) Scented Sani-Solution Cartridge 13) CatGenie Washable Granules



# CATGENIE TERMS

**SaniSolution 120 Cartridge<sup>™</sup>:** Dispenses sanitizer

**Control Panel:** Buttons, LEDs, and Error Indicators

**Hopper Cover:** Stores GenieHand, hides Hopper

**Hopper:** Chamber where Impeller macerates waste

**GenieEyes<sup>™</sup>:** Sensors delay auto wash if cat enters

**Processing Unit:** Holds motors and electronics

**GenieHand<sup>™</sup>:** Scoops, Scrubs, Sifts. Attaches to Arm

**Washable Granules<sup>™</sup>:** Satisfy cat's need to dig & cover

**Bowl:** Where cats and Washable Granules go

**Brim:** Encircles the Bowl; attaches to Base

**Base:** Very bottom of CatGenie

**Genie DrainHose<sup>™</sup>:** Drains into toilet or waste pipe

**Genie DrainHook<sup>™</sup>:** Only for draining into toilet

**Genie Water Supply Line<sup>™</sup>:** Connects to cold water

**Genie Electric Cord<sup>™</sup>:** Plugs into AC power



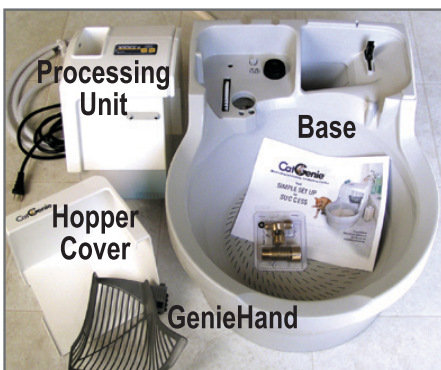
# TIP

Use this magic cartridge just 4 times a year to get a deep down thorough cleaning in every nook & cranny of your CatGenie. Just touch a button.

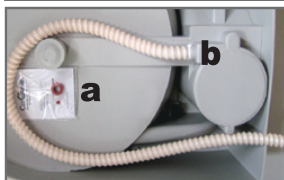
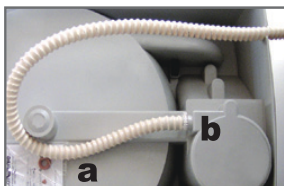
Get Machine Maintenance Cartridges at [catgenie.com.au](http://catgenie.com.au)



## 2. CatGenie® ASSEMBLE 4 EASY PIECES



**1)** Bring Base, Processing Unit, Hopper Cover, GenieHand, the T-Adapters, and this Setup Sheet to the location. Site must have a water source, a drain, and an electrical outlet.



**2)** Turn the Base over to access (Mind GenieArm in front) Remove packing material.

**a.** Leave Spare Parts Kit in place.

**b.** Coil Hose under base as shown.

Do not tightly coil any extra hose as that could cause clogs or poor draining of waste.

Thread Genie DrainHose through groove cut into back of Base Bring the DrainHose end to the waste drain or toilet. If you have excess hose, make another loose coil under the CatGenie Base.

**NOTE:** See Green Guide Page 10 for other correct Hose coilings.

If you have any problems or questions please call

**1300 228 436**

Don't attempt to fix or tamper with the CatGenie



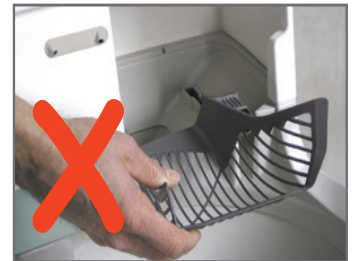
**3)** Ensure CatGenie Bowl is completely level for proper performance.



**4) a** Pull the Black Clip and GenieArm out of the slot.

**b** Attach the GenieHand to the Black Clip. A click means it's connected.

**c** Push Arm and Hand upright



**CAUTION:** The GenieHand is locked in place by the Processing Unit. Do NOT force the Hand into position. Remove Processing Unit to move it.



**5) a** Line up the Processing Unit over its slot.  
**b** Then carefully and securely slip the Unit into place.



**6) a** Fit the Hopper Cover into grooves on right side of the Processing Unit. Slide it down to fit into Brim slot.  
**b** CatGenie logo faces front.



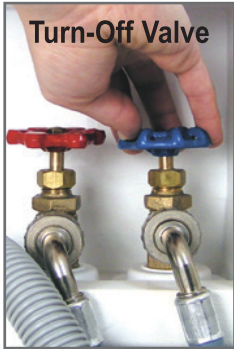
**7)** Fit the Genie Water Hose and Electric Cord in back of Unit into grooves behind the Base.

**GO TO 3 for LAUNDRY ROOM Set Up; GO TO 4 for BATHROOM Set Up**

# 3. CatGenie

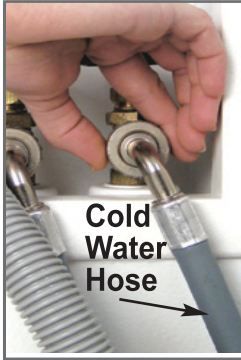
## LAUNDRY/UTILITY ROOM SET UP

You'll only need pliers and the large T-Adapter



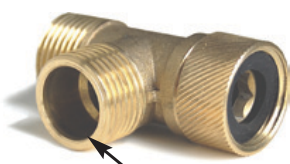
Turn-Off Valve

**1)** Have a towel handy. Shut off COLD water supply line to Washer.  
**TIP:** Cold water line may have a blue valve, be labeled, or feels cold.  
**WARNING: ONLY use COLD water line. Hot water damages CatGenie mechanism.**



Cold Water Hose

**2)** Unscrew COLD water hose from the shut-off valve. Loosen connection with pliers. Finish disconnecting hose by hand. Hold hose upright so water won't leak out.



The large T-Adapter MUST have its Black Washer. If missing, see Green Guide page 11.



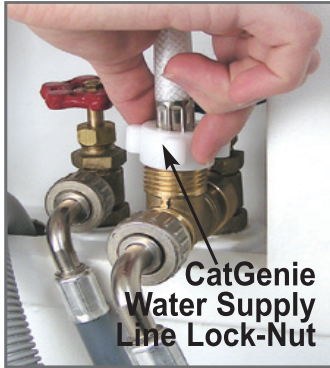
T's Lock Nut

**3)** Screw Lock-Nut on the T-Adapter to the water shut-off valve.  
**TIP:** If you use a tool to tighten connections, don't over tighten.



Lock Nut

**4)** Attach COLD water hose to the T-Adapter. Make sure hose's lock-nut is movable. Tighten lock nut around T-adapter threads.

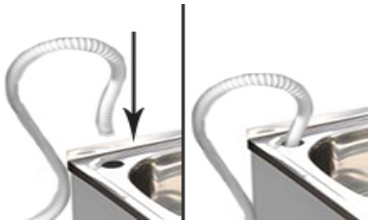


CatGenie Water Supply Line Lock-Nut

**5)** Screw the CatGenie Water Hose on to the T-Adapter.  
**CAUTION:** Do NOT use pliers to tighten the CatGenie Lock-Nut. Hand tighten only.

### WHERE TO PLACE GENIE WASTE HOSE

If you have an available, plumbed outlet hole in your laundry tub / sink, you can push the Cat Genie Waste Hose directly into the hole until it is securely in place.

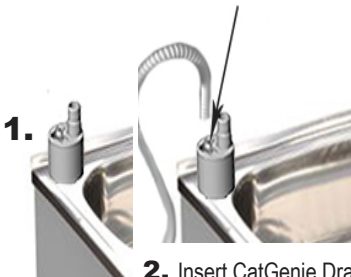


**NOTE:** If you only have one plumbed outlet hole in your Laundry tub / sink please view instructions for using the supplied Dual Hose Adapter below.

### USING GENIE DUAL HOSE ADAPTER



**1.** Insert the Dual Hose Adapter into the plumbed laundry tub / sink outlet.



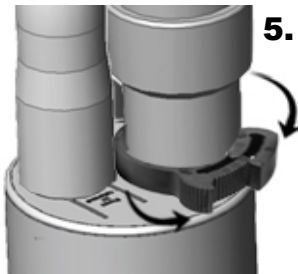
**2.** Insert CatGenie Drain Hose Tip into female entry of Dual Hose Adapter.



**3.** Place rubber hose end of Washing Machine Drain Hose over male spout on the Dual Hose Adapter and push down firmly until hose end is secure.



**4.** Attach supplied plastic hose clamp around rubber end of washing machine drain hose, ensuring hose end is pushed down onto Dual Hose Adapter firmly.



**5.** Push the two clamp ends together to tighten clamp until hose is securely attached and cannot be removed from Dual Hose Adapter.

### Note:

If you have low water pressure, best NOT to run your washing machine and the CatGenie at the same time.

**GO TO 5 FOR NEXT STEPS**



## BATHROOM/POWDER ROOM SET UP

You'll only need a shifter or pliers and the small T-Adapter



**1)** Access the cold water line to a toilet or sink.

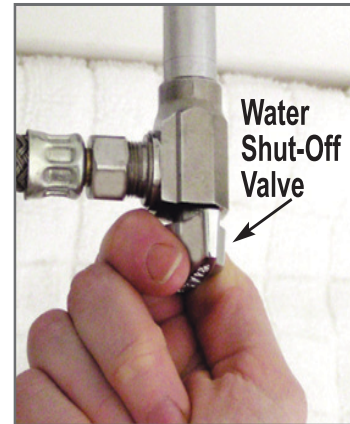
**WARNING:** Use **ONLY** the **COLD** water line to the sink. **HOT** water **DAMAGES** the CatGenie. Fresh water to a toilet is cold.



Rigid Pipe

Flexible Pipe

**NOTE:** If either sink or toilet water line is a rigid pipe, measure the pipe and replace with a flexible water pipe available at any hardware store. Turn off water. Replace the rigid pipe with a flex pipe. With flex pipe in place, proceed with CatGenie setup.



Water Shut-Off Valve

**2)** Shut the COLD water off by turning the valve on the toilet or sink water supply line. Keep a towel handy to catch any drips.

**FYI:** Plumbers warn when a toilet tank refills after shut-valve is OFF, you have an unsafe situation. Valve needs to be replaced.

**NOTE:** Fix valve, or move Unit to another location, or return the CatGenie. Call us at

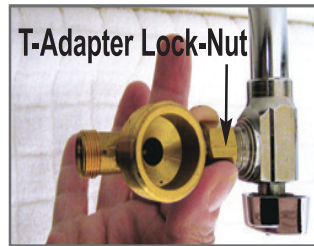


**3)** For toilet, check that water is off by flushing the toilet to the empty tank.



Toilet Lock-Nut

**4)** Unscrew the water-line flex pipe at the valve. You may need a tool to loosen the lock-nut connection.

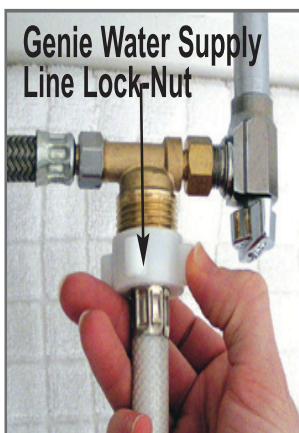


T-Adapter Lock-Nut

**5)** Connect and hand tighten the small T-Adapter Lock-Nut to the water shut-off valve.



**6)** Connect the flex pipe to the T-Adapter and hand tighten pipe's lock-nut. Use a shifter for the last 1/4 turn on both connections.



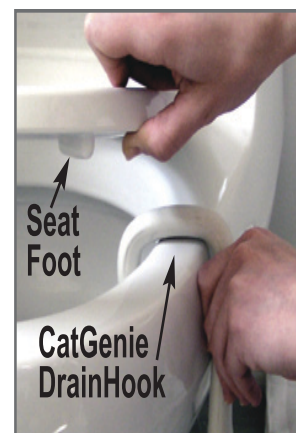
Genie Water Supply Line Lock-Nut

**7)** Connect the CatGenie Water Hose to the T-Adapter and HAND TIGHTEN its Lock-Nut. Do not use a tool on the CatGenie plastic Lock-Nut.



Push Hook & Hose Together

**8)** Add the Hook to Hose only if draining into a toilet. Push the CatGenie Hose and Hook tightly together until the white Tip at the end of the Hose is covered by the Hook.



Seat Foot

CatGenie DrainHook

**9)** Place CatGenie DrainHook over the toilet bowl and lower the toilet seat. Check that seat has "feet" so Hook is not squeezed when toilet seat is down.  
**NOTE:** If water pressure is low, don't flush toilet or run appliances during a Cycle.

**GO TO 5 FOR NEXT STEPS**



# 5. CatGenie® READY, SET, RUN YOUR CATGENIE

Whether Laundry or Bathroom Set Up, do the following next.



**1)** Put a towel under the connection. **Turn water on.** Check all connections for leaks. Use pliers or a shifter to tighten fittings that drip.

**CAUTION:** Do NOT use a tool to tighten the CatGenie white plastic Lock Nut. It has a pressure seal that only needs hand tightening.



**2)** Empty entire Washable Granules Box into the Bowl. Box fills to level indented inside Bowl. Spread Granules out evenly.

**WARNING:**

Only use CatGenie Washable Granules. **DO NOT** use or mix cat litter in the CatGenie. Any other litter causes severe damage to the CatGenie and voids your Warranty.

If you have any problems or questions please call

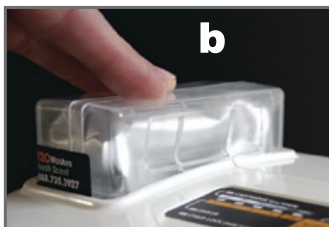
**1300 228 436**

Don't attempt to fix or tamper with the CatGenie



**3) a** Slip the Cartridge into slot on top of the Unit. Notch points to back.

**b** Push down firmly to activate Cartridge.

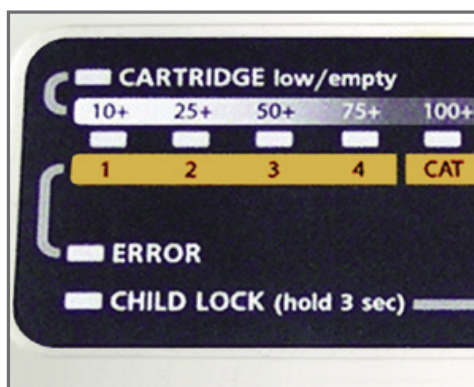


**NOTE:** Your CatGenie can not function with an empty Cartridge. **ALWAYS HAVE AN EXTRA 120 Cartridge** on hand. The Cartridge releases the exact amount of cat-safe, vet-approved SaniSolution into each wash.

**TIP:** In Cat Activation mode, the Cartridge is good for **240 washes**. On other settings, it is good for 120 washes.



**4)** Plug in the CatGenie electric cord.



**5)** When plugged in, a series of Beeps sound and all LEDs light up in sequence. Means CatGenie is working correctly.

**NOTE:** If Beeps do not sound, check if the Processing Unit is securely in place. Lift it up and replace it into its slot. Check the electric connection.



**6)** NOW run a Cleaning Cycle to see if your setup is correct and to understand the Unit's operation. Press & Release START/ PAUSE Button.



**NOTE:** Ridges on the GenieHand purposely rub against a post on the Brim so that excess Granules get shaken back into the Bowl. The sound it makes is normal.

**MAKE SURE YOUR CATS ARE NOT NEARBY WHEN YOU FIRST RUN YOUR CATGENIE**

# 6. CatGenie<sup>®</sup> YOUR CAT AND YOUR CATGENIE

Every cat is different. From our experience with over 100,000 cats, most, once shown the Bowl and Granules, know it's where to go and use it immediately. If CatGenie is in the same place as the litter box, adjustment is much easier. Some cats need time to adjust to something new. During this time, it is safe

and normal for cats to refrain from "going" in the first 24 to 48 hours. Do not make a fuss over the CatGenie. Act normal, natural. Let your cats be curious. Do not hover about. Do not follow your cats into their bathroom. Praise and treat them when they use CatGenie. **SEE Orange Cat Acclimation Guide for details and techniques.**



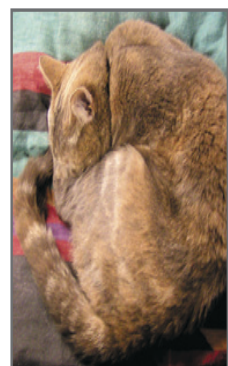
**1)** If your cats do NOT use CatGenie immediately, put their old litter box nearby. DO NOT clean out old box. The dirtier it gets, the more cats prefer the CatGenie. remove the old box and litter after 5 days or once your cats use CatGenie. See IMPORTANT, below.



**WARNING:**  
Do NOT mix cat litter or add used litter with Washable Granules in the CatGenie Bowl. Cat litter causes severe damage to the CatGenie and its use voids your Warranty.



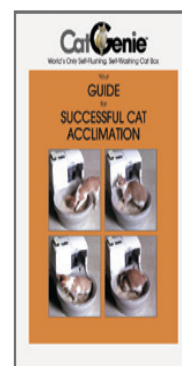
**TIP:** If having trouble getting your cat to use the Granules, mix them with litter BUT ONLY in the litter box. Toss entire contents once the cat litter box is soiled.



**2)** In the first week, you may want to run the CatGenie while your cats are sleeping. The new sound might startle them. Over time your cats will associate the sound with their new, always clean cat box.



**3)** Until your cats are comfortable with CatGenie, manually press the START Button to clean. Soon, you can program the Cat Start or Auto Start modes for automatic cleaning. See page 7 in Green Guide.



**4)** Use Cat Acclimation Guide for tips on cat acceptance. Guides are also on line at: CatGenie.com.au under the Help Centre menu. Questions? Call: 1300 228 436

## NEWS: CAT ACTIVATION is the most efficient & effective setting.

In Cat Activation, the 120 Cartridge is good for 240 washes & tests show CatGenie runs better.

If you chose the Auto Start option, follow this schedule: 1 Cat, clean 1-2 times per day. 2 Cats, clean 3-4 times per day. 3 Cats, clean 4-5 times per day. On Auto, Cartridge is good for 120 washes. Setup info page 7 in Green Guide.

## IMPORTANT

During your's cat acclimation period, it is important to run at least two cleaning cycles per cat every day.

Clean even if you do not see any waste in the box as urine does NOT show on the Washable Granules.

## WHAT TO EXPECT DURING CLEANING

Bowl rotates and turns to the left and to the right

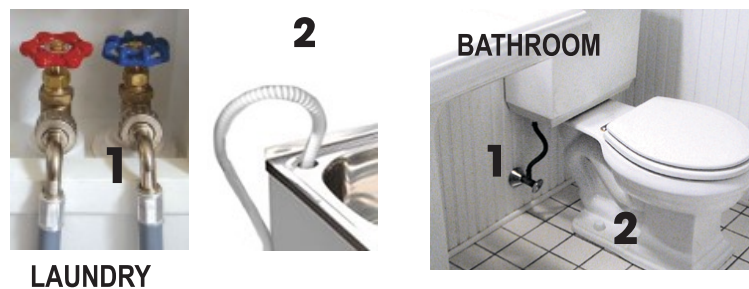
- **Scoop Cycle:** GenieHand scoops 3 times to remove solids. About 7 min.
- **Wash Cycle:** After scooping, water flows in to cover Washable Granules. During the 3 washes, SaniSolution, with GenieHand, scrubs Granules and Bowl. Hand moves to agitate Granules. Solids get liquefied inside the Hopper. Water and waste drains out. Interior is rinsed clean. About 11 min.
- **Dry Cycle:** Hand sifts through Granules for thorough drying. About 17 min.

**TIP: View informative videos at CatGenie.com.au in the Help Centre!**



# STOP

## WHERE SHOULD CATGENIE GO?



LAUNDRY

### BEST LOCATION FOR CATGENIE

is a Laundry or Utility Room **OR** a Bath or Powder Room...

### BECAUSE YOUR CATGENIE NEEDS

**1)** fresh water from a cold water supply line that connects to a washing machine, sink, or toilet **2)** a laundry drain pipe or toilet for cat waste removal, **3)** an electrical outlet. The CatGenie Water Supply Hose is 2.4m long; the CatGenie DrainHose is 3m long.



### ALL YOU NEED

is a pair of pliers or a 1/2" and 3/4" spanner or a shifter to secure the T-adapters to the water outlet.

## WILL IT FIT?



### MEASURE THE AREA

to make sure that your CatGenie fits. It's 53.4cm tall (including cartridge), 62.3cm deep, 44cm wide at the top of the unit, 48.6cm wide at the top of the bowl and the entry point of the bowl is 21cm tall. If you add the Genie Dome, the height at the top of the dome is 49.5cm and the opening is 22cm high.

## TAKE CARE OF YOUR CATS WHEN YOU SET UP YOUR CATGENIE!

Setup CatGenie in its location. If the CatGenie goes in an area different than the old litter box, move the old litter box to the new area. If in the same location, keep the old box in place, don't clean it.

**NOTE:** If the litter box or boxes need to be moved a great distance, cat behaviorists recommend moving the old box little by little, slowly over time to the new location so that your cats can adjust to the change.



**NOW YOU ARE READY TO UNPACK YOUR CATGENIE**

**START**